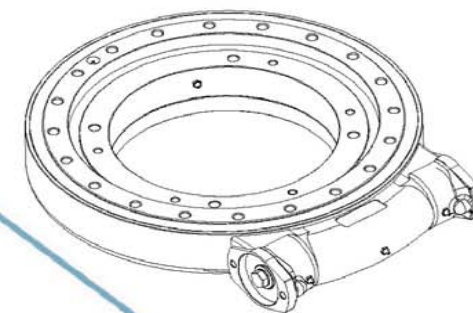




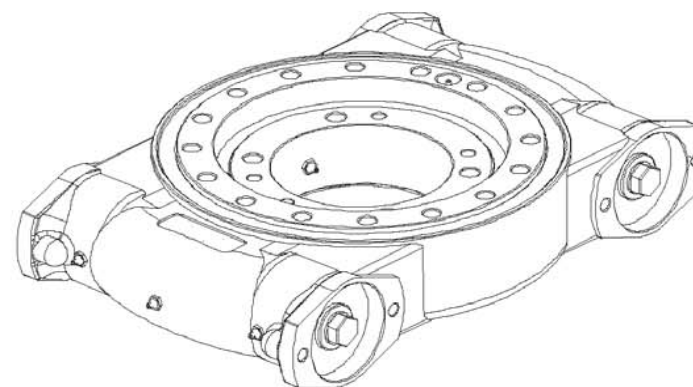
TAVOLE GIREVOLI



www.faremec.com



Soluzione personalizzata Customized Solution



Con più di 40 anni di esperienza nella produzione di Ralle di Rotazione , Supporti in Acciaio, Cuscinetti Speciali, **FA.RE.MEC.** è diventata un punto di riferimento nella produzione di soluzioni di movimentazione per il settore industriale, del trasporto e sollevamento, nonché nel settore delle energie rinnovabili.

FA.RE.MEC. ha i propri stabilimenti produttivi in ITALIA, dove abbiamo la possibilità di fornire soluzioni standard competitive da magazzino o personalizzate secondo specifica del cliente attraverso un processo di produzione flessibile e garantendo consegne puntuali.

Oltre alla produzione “storica” menzionata prima e grazie alla flessibilità della nostra officina produciamo e rigeneriamo **TAVOLE GIREVOLI DI ROTAZIONE** standard o in serie speciale su specifica del cliente.

L'accurata gestione delle fasi di produzione e lavorazione, l'elevata competenza del nostro reparto produttivo, la qualità dei nostri trattamenti termico/superficiali e i minuziosi controlli durante tutte le fasi del ciclo di lavoro, garantiscono precisione e affidabilità a tutti i nostri prodotti.

Prodotti che trovano applicazione industriale e artigianale nelle attrezzature di trasporto e sollevamento, nel settore agricolo, dell'industria alimentare, del packaging e nei macchinari per marmo, legno e vetro.

Applicazione del prodotto

Product Application



Autogru montata
Mounted Truck Crane



Gru marina
Marine Crane



Martello idraulico demolitore
Hydraulic Breaking Hammer



Camion sottovuoto
Vacuum Truck



Attrezzatura
di trasmissione
Transmission Equipment



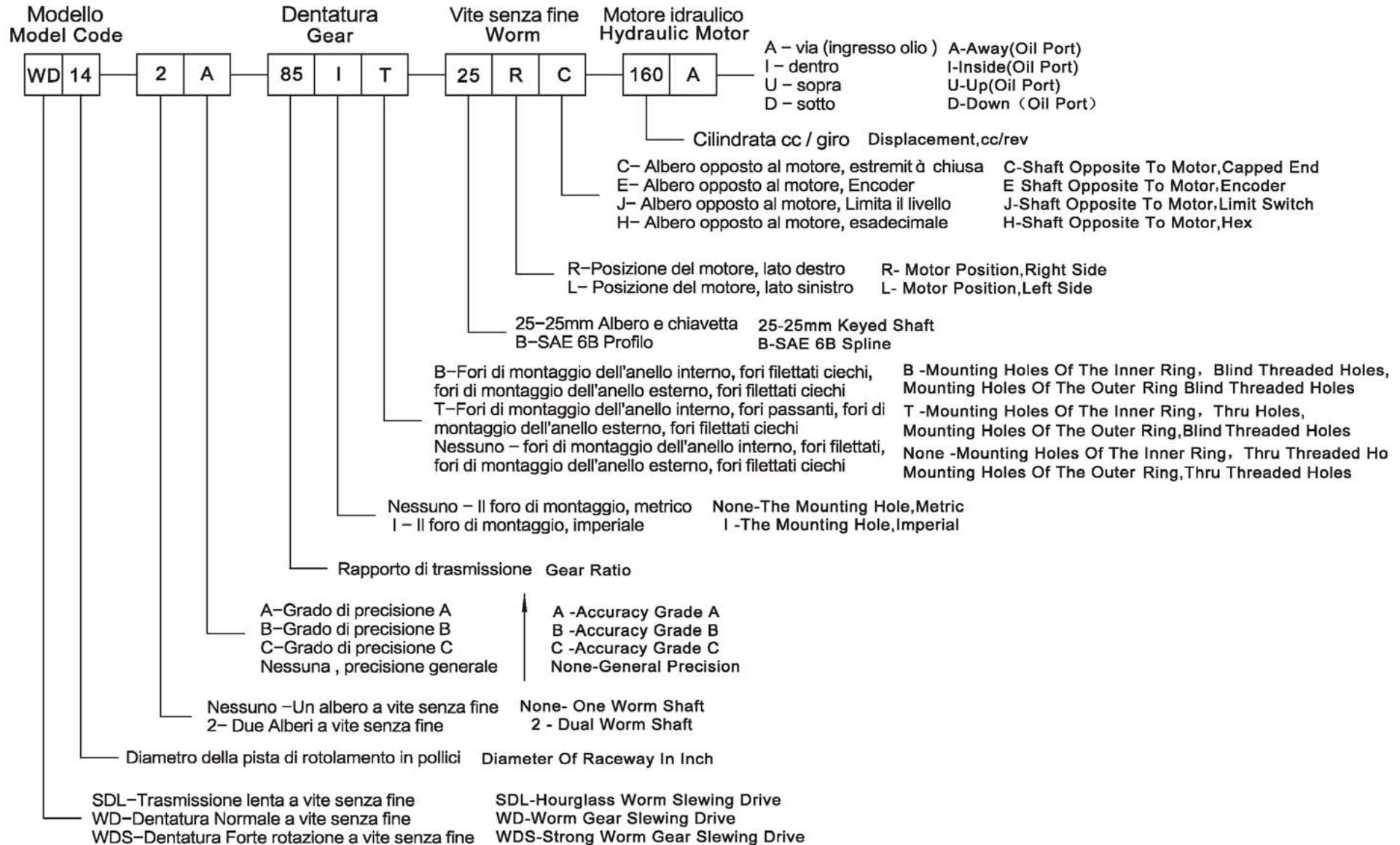
Lavorazione del legname
Timber Grab



Piattaforme aeree
Aerial Working Platform

Spiegazione codice

Code Description



Struttura della Tavola girevole

The Structure Sketch of Slewing Drive

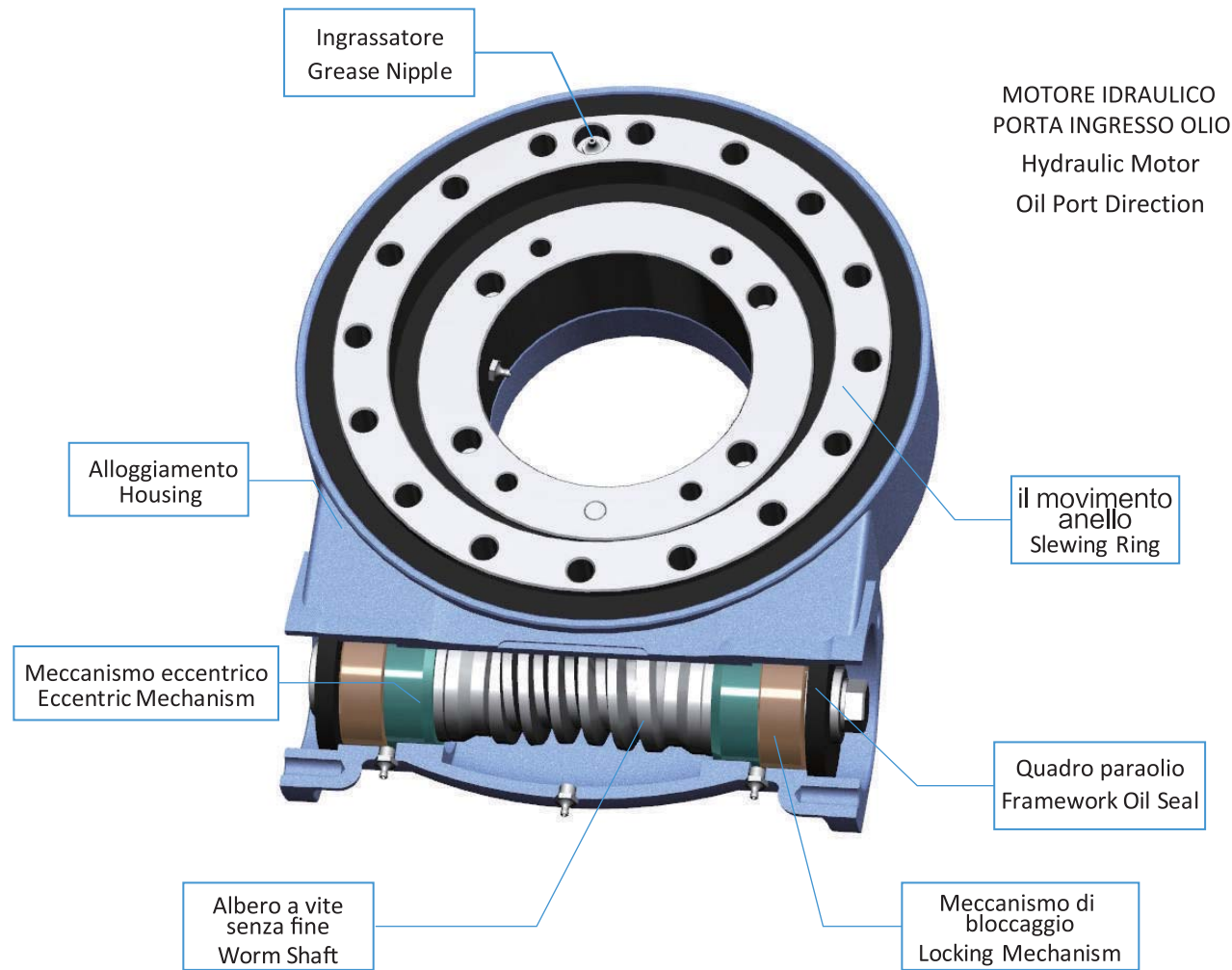


Diagramma Momento Torcente & Diagramma Coppia in uscita

Tilting Moment Diagram & Output Torque Diagram

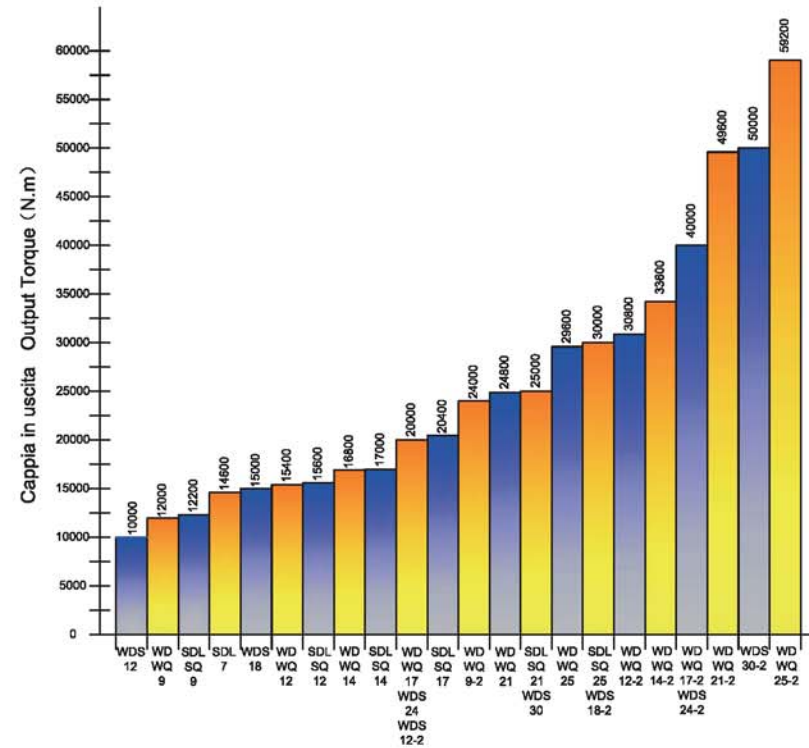
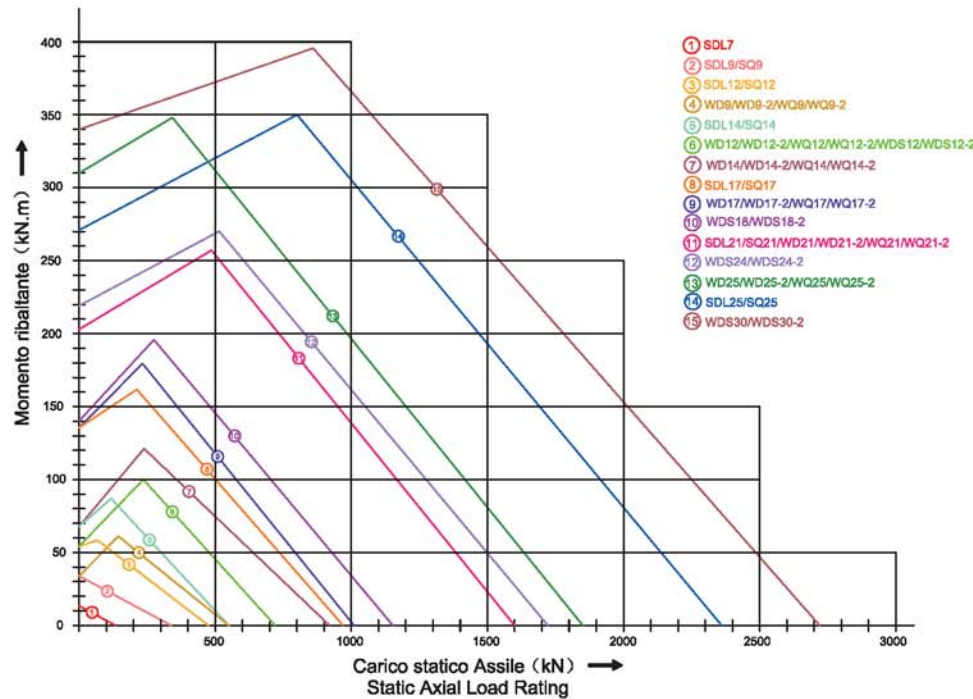
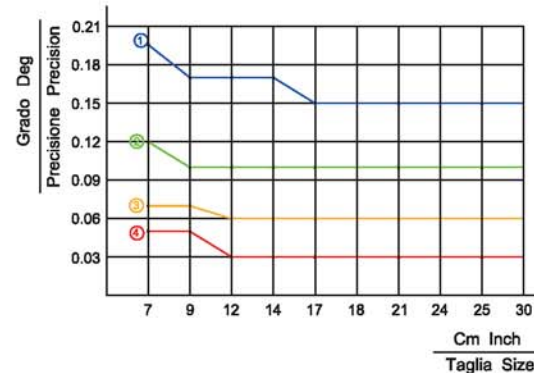


Diagramma di precisione

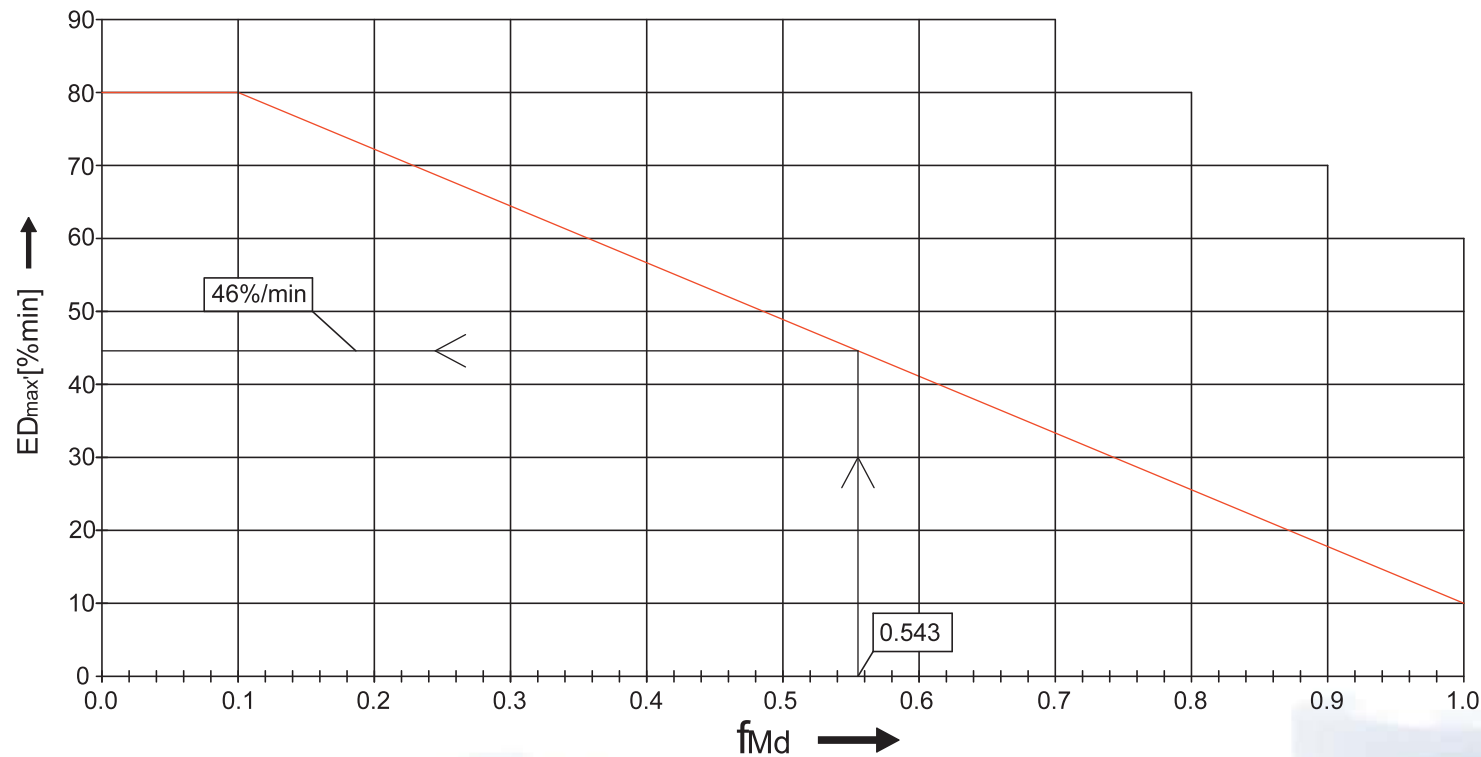
Precision Diagram



- ①:SDL, SQ, WD, WQ, WDS **PRECISIONE GENERALE** General Precision
- ②:SDL, SQ, WD, WQ, WDS **C PRECISIONE** C Precision
- ③:SDL, SQ, WD, WQ, WDS **B PRECISIONE** B Precision
- ④:SDL, SQ, WD, WQ, WDS **A PRECISIONE** A Precision

Diagramma di durata in servizio

Working Time Diagram



Il servizio massimo consentito al minuto The maximum permissible duty per minute

pre-condizioni per lo schema del servizio
massimo ammissibile ED_{max}
verifica della condizione:
Condizione soddisfatta È ammesso il
servizio al minuto

Pre-conditions for the diagram of maximum
permissible Duty per minute ED_{max}'
Verifying the condition :ED_B' ≤ ED_{max}' condition
fulfilled Duty per minute is permissible .

$$f_{MD} = \frac{M_{dB}}{M_{dmax}}$$

$$ED_{B'} = \frac{D}{Min} * 100\%$$

D rappresenta l'operazione di rotazione
dell'azionamento al minuto

Es. : Funzionamento della rotazione della
trasmissione al minuto

20sec. Ruotando 40sec. Fermo D=0,3333

D represents the operation of Slew Drive
per minute.

Eg: Operation of Slew Drive per minute:
20s rotating 40s standing still. D=0.3333

SD3-62-12RC

Parametri di prestazione
Performance Parameters

SD3-62-12RC

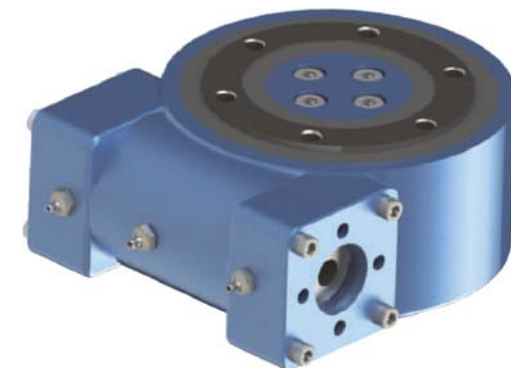
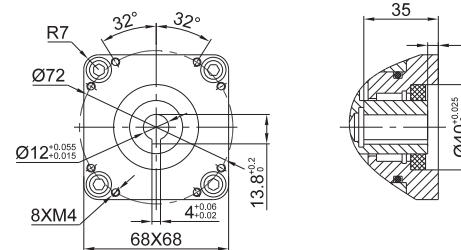
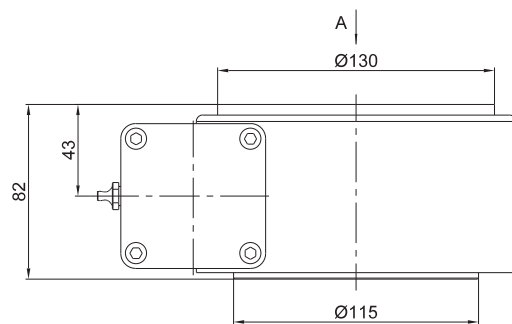
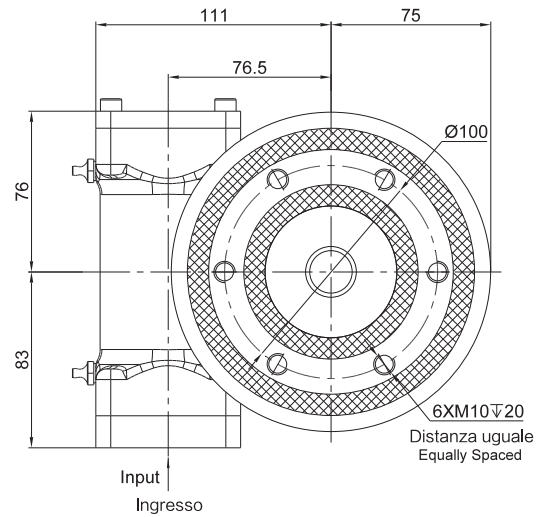
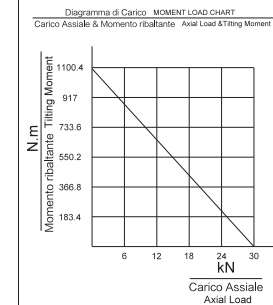


Tavola Girevole Parametri di prestazione Slewing Drive Performance Parameters

Velocità di uscita nominale	Rated Output Speed	<2.5rpm	
Coppia in uscita	Output Torque	400 N.m	295 lbf.ft
Momento Ribaltante	Tilting	1100 N.m	811 lbf.ft
Coppia Statica	Holding Torque	2000 N.m	1475 lbf.ft
Carico statico Assile	Static Axial Load Rating	30 kN	6750 lbf
Carico Statico Radiale	Static Radial Load Rating	16.6 kN	3735 lbf
Rapporto di trasmissione	Gear Ratio	62:1	
Precisione	Precision	≤0.2°	



SD5-62B-12RC

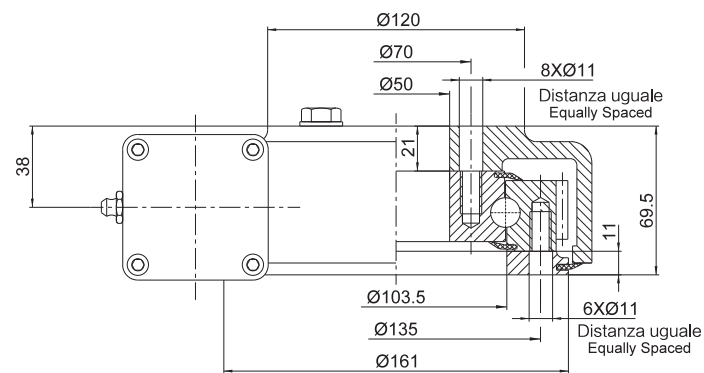
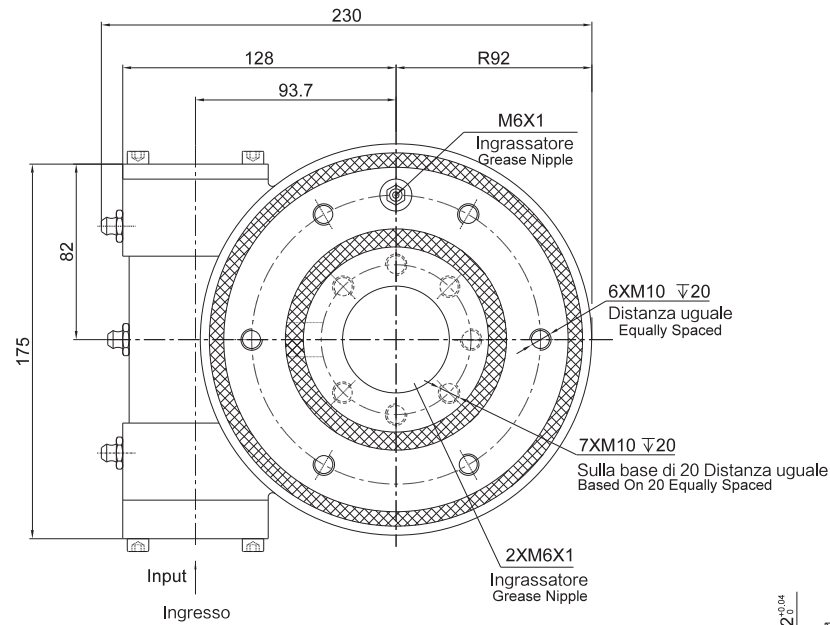
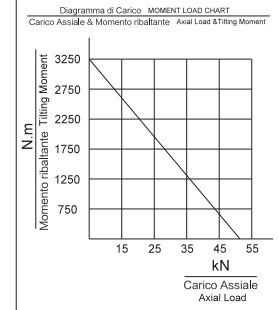
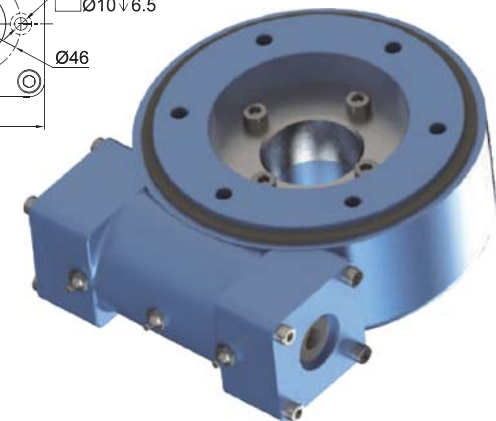
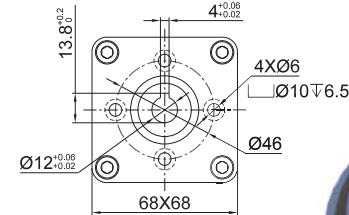
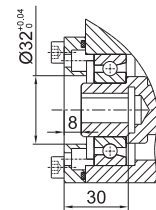


Tavola Girevole Parametri di prestazione Slewing Drive Performance Parameters

Velocità di uscita nominale	Rated Output Speed	<2.5 rpm	
Coppia in uscita	Output Torque	600 N.m	443 lbf.ft
Momento Ribaltante	Tilting	2800 N.m	2065 lbf.ft
Coppia Statica	Holding Torque	5000 N.m	3688 lbf.ft
Carico statico Assiale	Static Axial Load Rating	45 kN	10125 lbf
Carico Statico Radiale	Static Radial Load Rating	22 kN	4950 lbf
Rapporto di trasmissione	Gear Ratio	62:1	
Precisione	Precision	≤0.2°	



Ingresso
Input
1:2



SDL7-71B-12RC

Parametri di prestazione
Performance Parameters

SDL7-71B-12RC

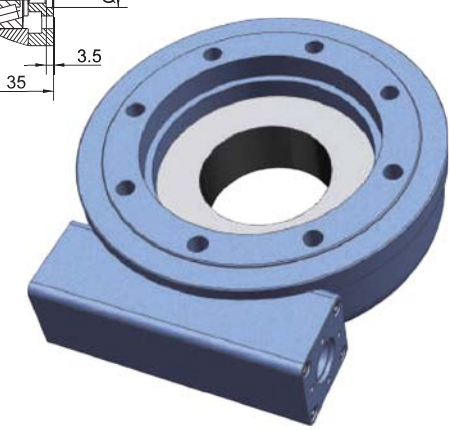
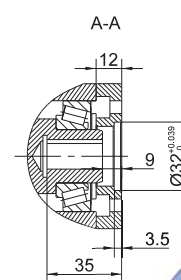
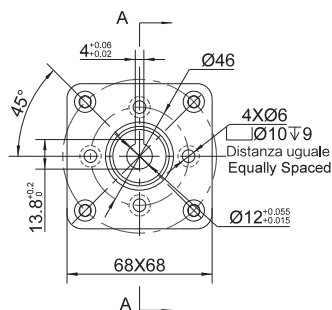
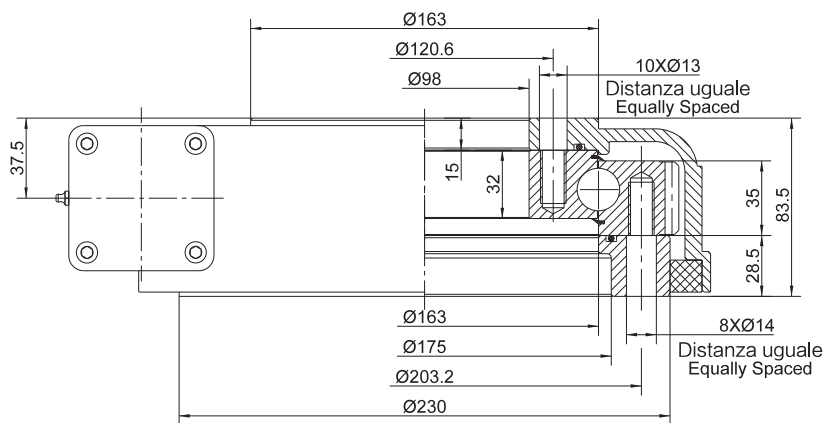
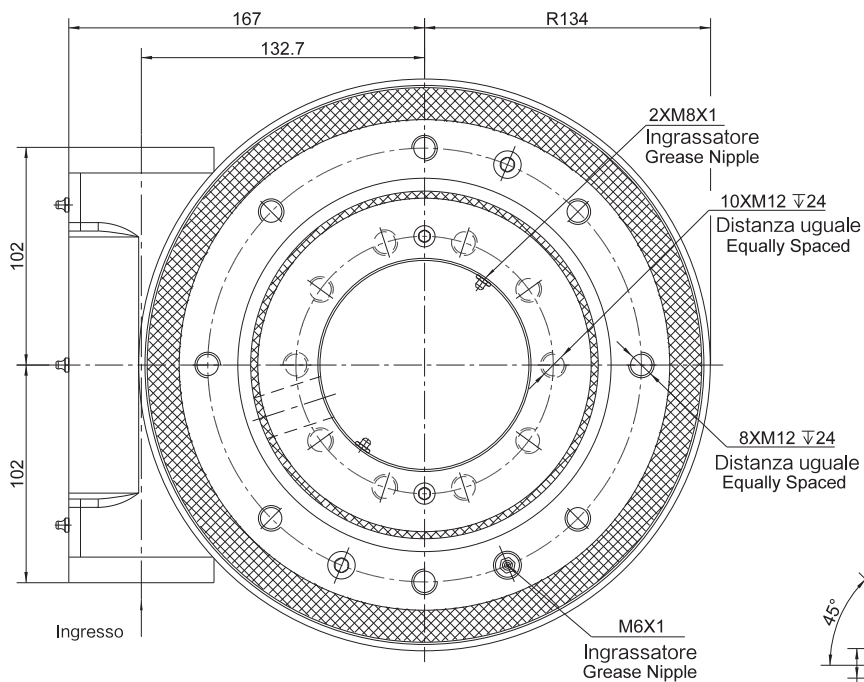
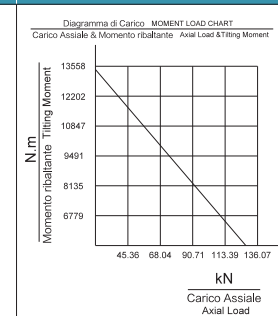


Tavola Girevole Parametri di prestazione Slewing Drive Performance Parameters

Velocità di uscita nominale	Rated Output Speed	<2.5rpm	
Coppia in uscita	Output Torque	1500 N.m	1110 lbf.ft
Momento Ribaltante	Tilting	13500 N.m	9957 lbf.ft
Coppia Statica	Holding Torque	10400 N.m	7671 lbf.ft
Carico statico Assiale	Static Axial Load Rating	133 kN	29900 lbf
Carico Statico Radiale	Static Radial Load Rating	53 kN	11915 lbf
Rapporto di trasmissione	Gear Ratio	71:1	
Precisione	Precision	≤0.2°	



SD9-61B-BRH

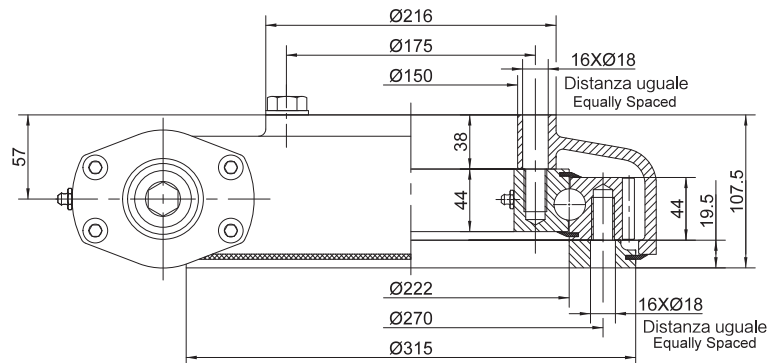
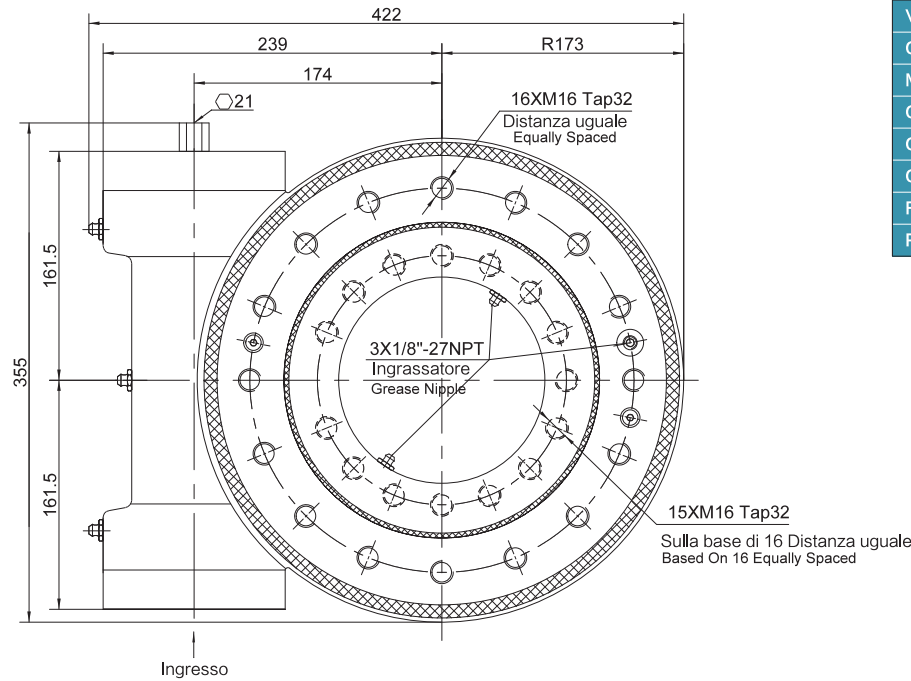
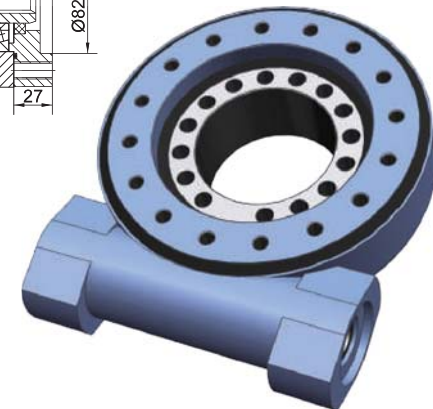
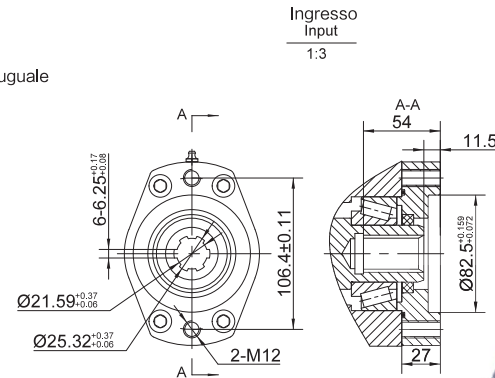
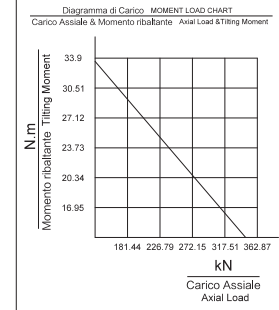


Tavola Girevole Parametri di prestazione Slewing Drive Performance Parameters

Velocità di uscita nominale	Rated Output Speed	<2.5rpm	
Coppia in uscita	Output Torque	6.5 kN.m	4794 lbf.ft
Momento Ribaltante	Tilting	33.9 kN.m	25x10 ³ lbf.ft
Coppia Statica	Holding Torque	38.7 kN.m	29x10 ³ lbf.ft
Carico statico Assiale	Static Axial Load Rating	338 kN	76x10 ³ lbf
Carico Statico Radiale	Static Radial Load Rating	135 kN	30x10 ³ lbf
Rapporto di trasmissione	Gear Ratio	61:1	
Precisione	Precision	±0.17°	



SD12-78B-BRH

Parametri di prestazione
Performance Parameters

SD12-78B-BRH

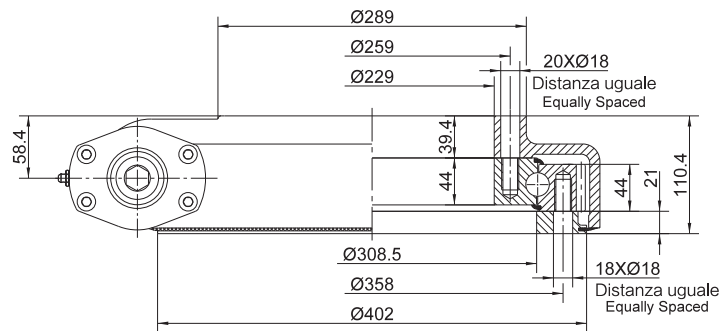
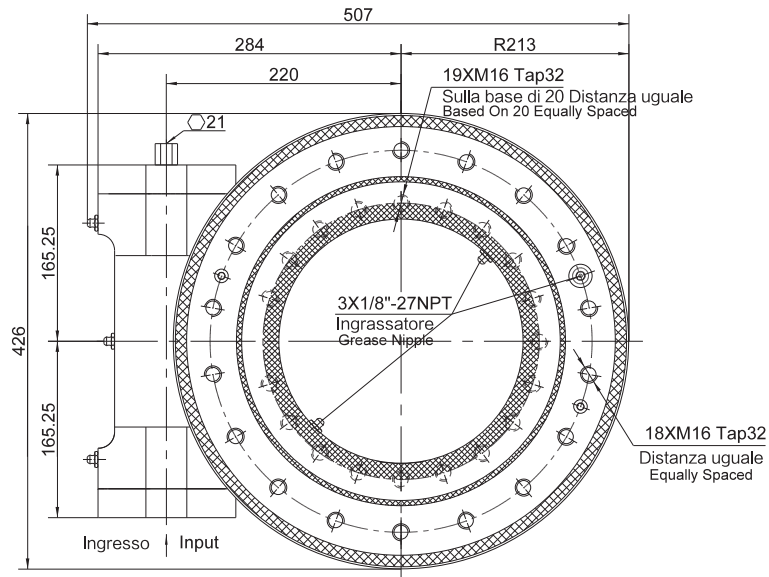
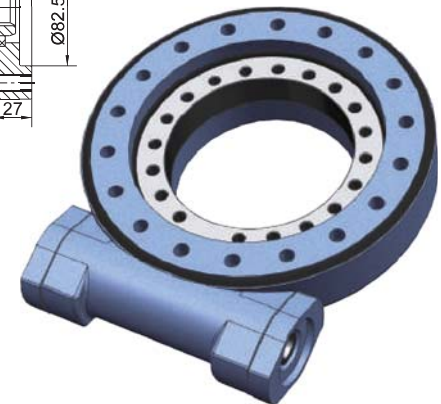
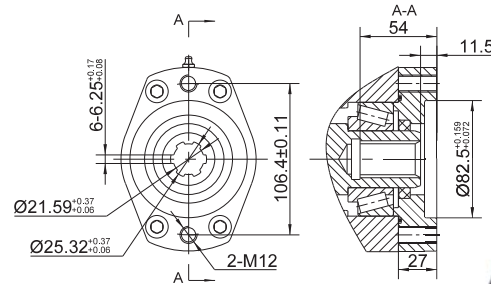
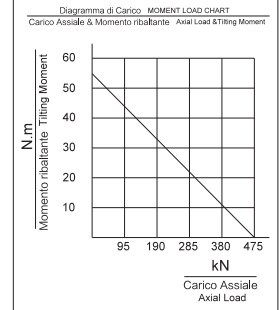
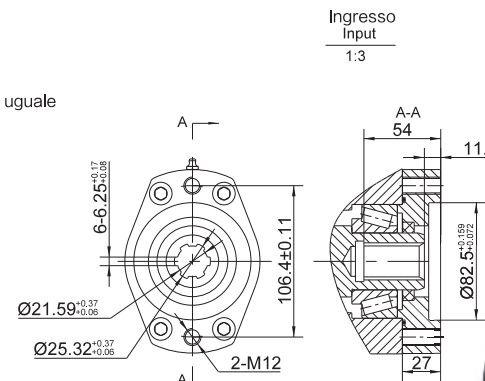
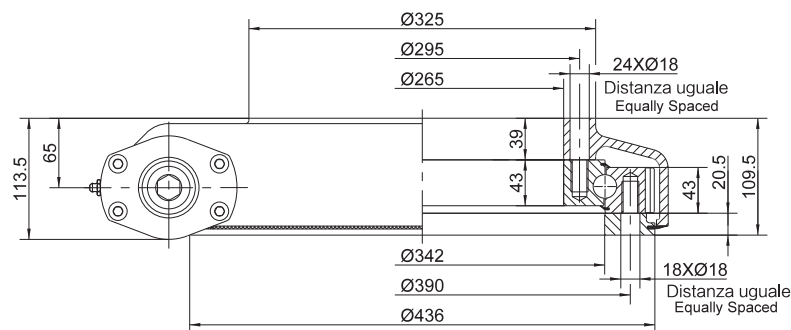
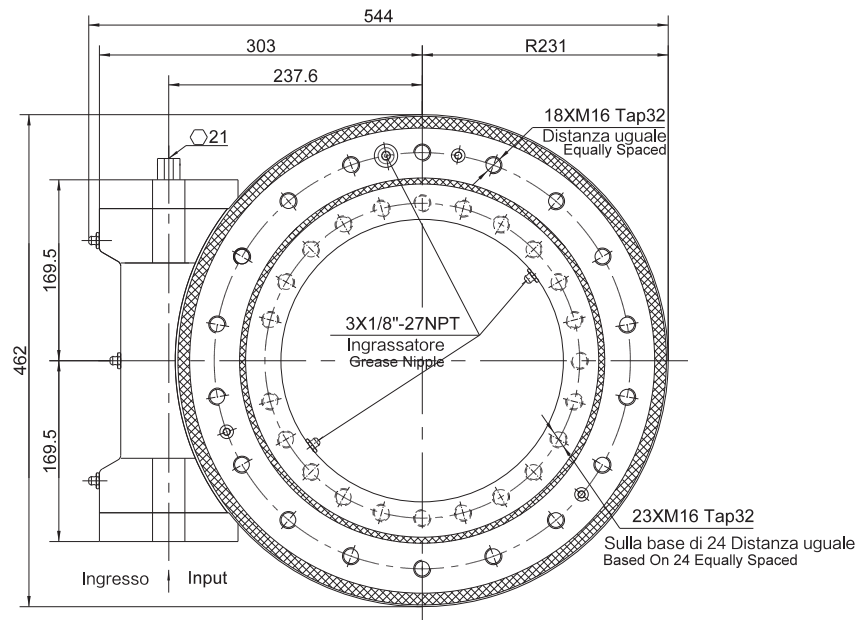


Tavola Girevole Parametri di prestazione Slewing Drive Performance Parameters

Velocità di uscita nominale	Rated Output Speed	<2.5rpm	
Coppia in uscita	Output Torque	7.5 kN.m	5532 lbf.ft
Momento Ribaltante	Tilting	54.3 kN.m	40x10 ³ lbf.ft
Coppia Statica	Holding Torque	43 kN.m	50x10 ³ lbf.ft
Carico statico Assiale	Static Axial Load Rating	475 kN	107x10 ³ lbf
Carico Statico Radiale	Static Radial Load Rating	190 kN	43x10 ³ lbf
Rapporto di trasmissione	Gear Ratio	78:1	
Precisione	Precision	≤0.17°	



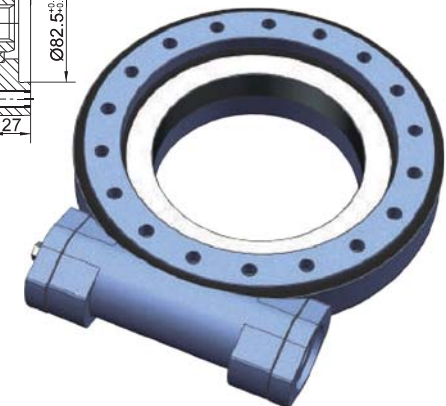
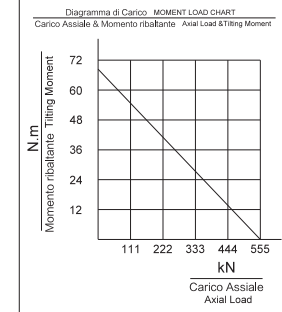
SD14-85B-BRH



Ingresso
Input
1:3

Tavola Girevole Parametri di prestazione Slewing Drive Performance Parameters

Velocità di uscita nominale	Rated Output Speed	<2.5rpm	
Coppia in uscita	Output Torque	8 kN.m	5900 lbf.ft
Momento Ribaltante	Tilting	67.8 kN.m	50x10 ³ lbf.ft
Coppia Statica	Holding Torque	48 kN.m	35x10 ³ lbf.ft
Carico statico Assiale	Static Axial Load Rating	555 kN	125x10 ³ lbf
Carico Statico Radiale	Static Radial Load Rating	222 kN.	50x10 ³ lbf
Rapporto di trasmissione	Gear Ratio	85:1	
Precisione	Precision	±0.17°	



SD17-102B-BRH

Parametri di prestazione
Performance Parameters

SD17-102B-BRH

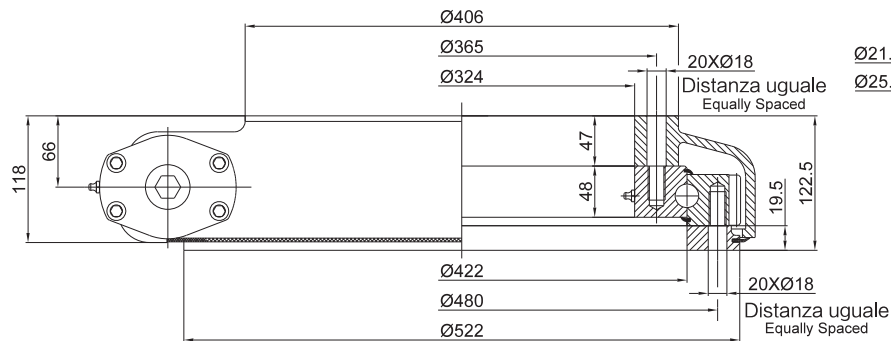
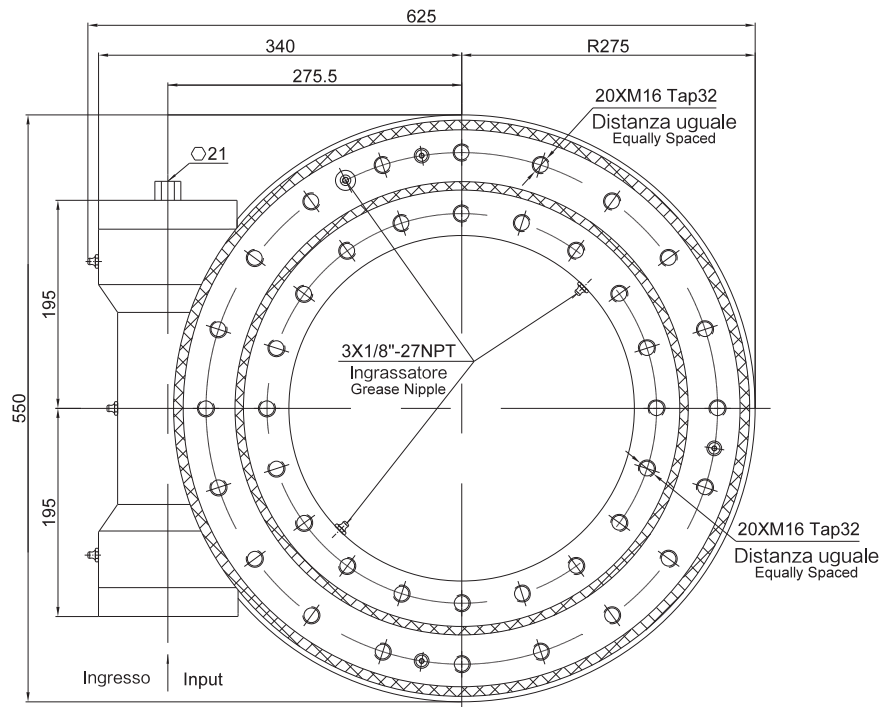
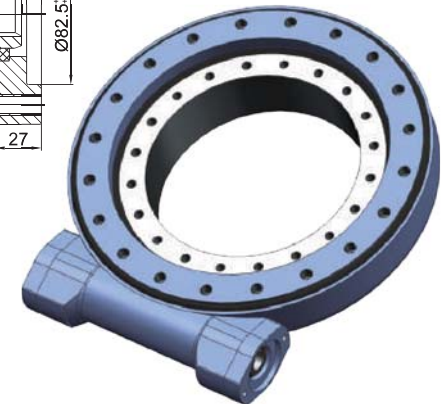
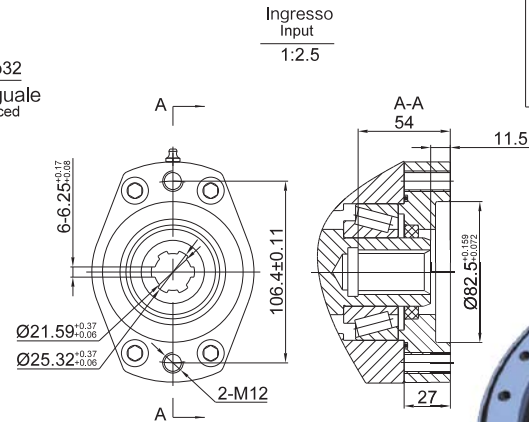
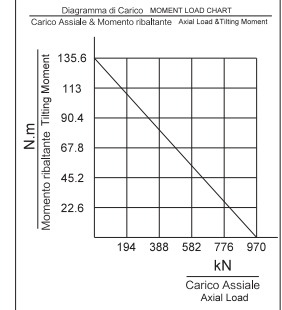


Tavola Girevole Parametri di prestazione Slewing Drive Performance Parameters

Velocità di uscita nominale	Rated Output Speed	<2.5rpm	
Coppia in uscita	Output Torque	10 kN.m	7376 lbf.ft
Momento Ribaltante	Tilting	135.6 kN.m	100x10 ³ lbf.ft
Coppia Statica	Holding Torque	72.3 kN.m	53x10 ³ lbf.ft
Carico statico Assiale	Static Axial Load Rating	970 kN	218x10 ³ lbf
Carico Statico Radiale	Static Radial Load Rating	390 kN	88x10 ³ lbf
Rapporto di trasmissione	Gear Ratio	102:1	
Precisione	Precision	≤ 0.15°	



SD21-125B-BRH

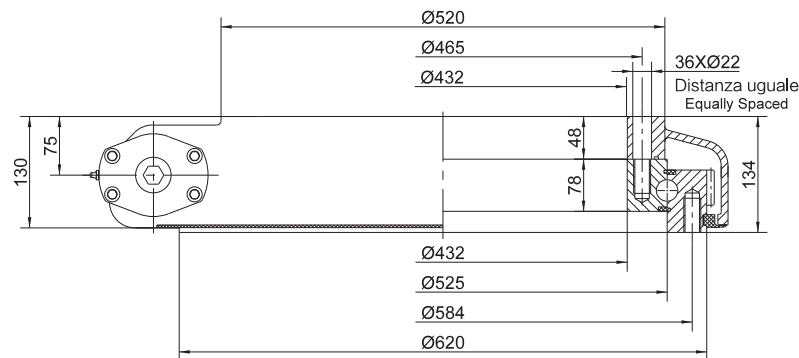
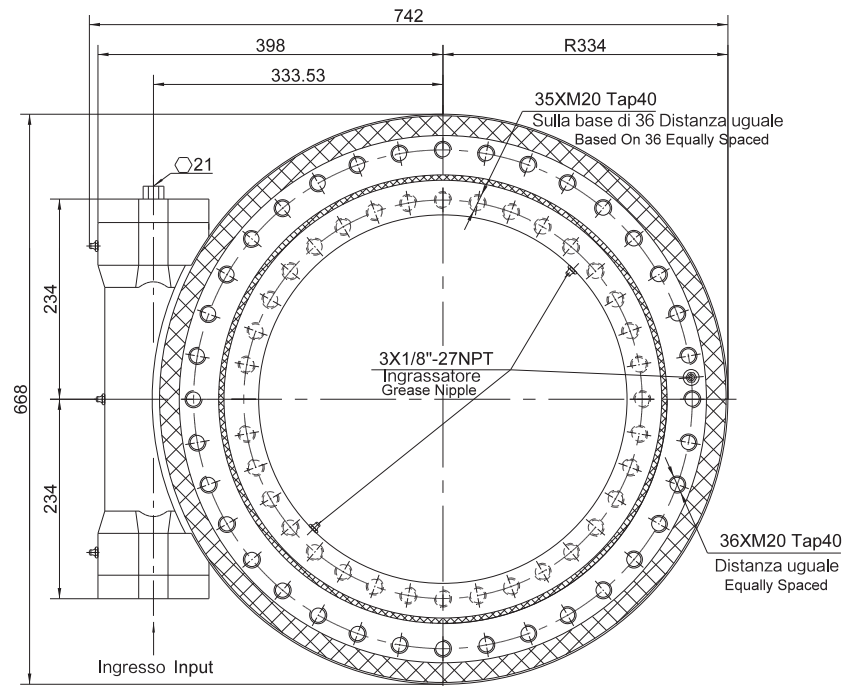
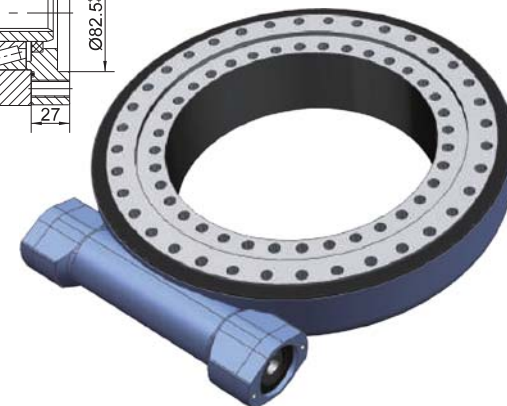
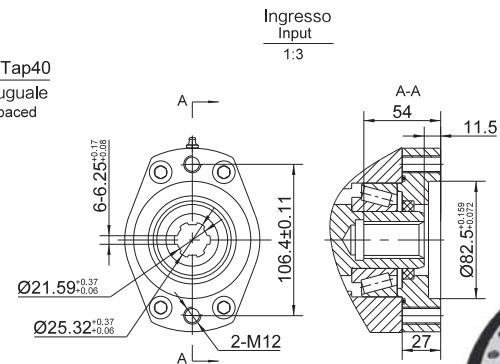
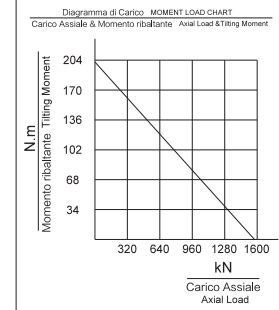


Tavola Girevole Parametri di prestazione Slewing Drive Performance Parameters

Velocità di uscita nominale	Rated Output Speed	<2.5rpm	
Coppia in uscita	Output Torque	15 kN.m	11064 lbf.ft
Momento Ribaltante	Tilting	203 kN.m	149x10 ³ lbf.ft
Coppia Statica	Holding Torque	105.8 kN.m	78x10 ³ lbf.ft
Carico statico Assile	Static Axial Load Rating	1598 kN	360x10 ³ lbf
Carico Statico Radiale	Static Radial Load Rating	640 kN	144x10 ³ lbf
Rapporto di trasmissione	Gear Ratio	125:1	
Precisione	Precision	±0.15°	



SD25-150B-BRH

Parametri di prestazione
Performance Parameters

SD25-150B-BRH

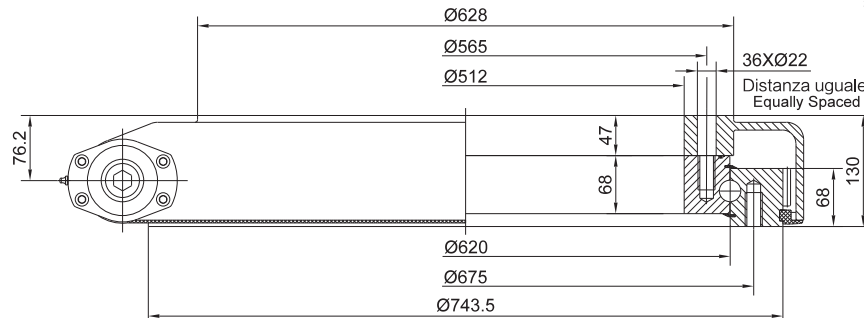
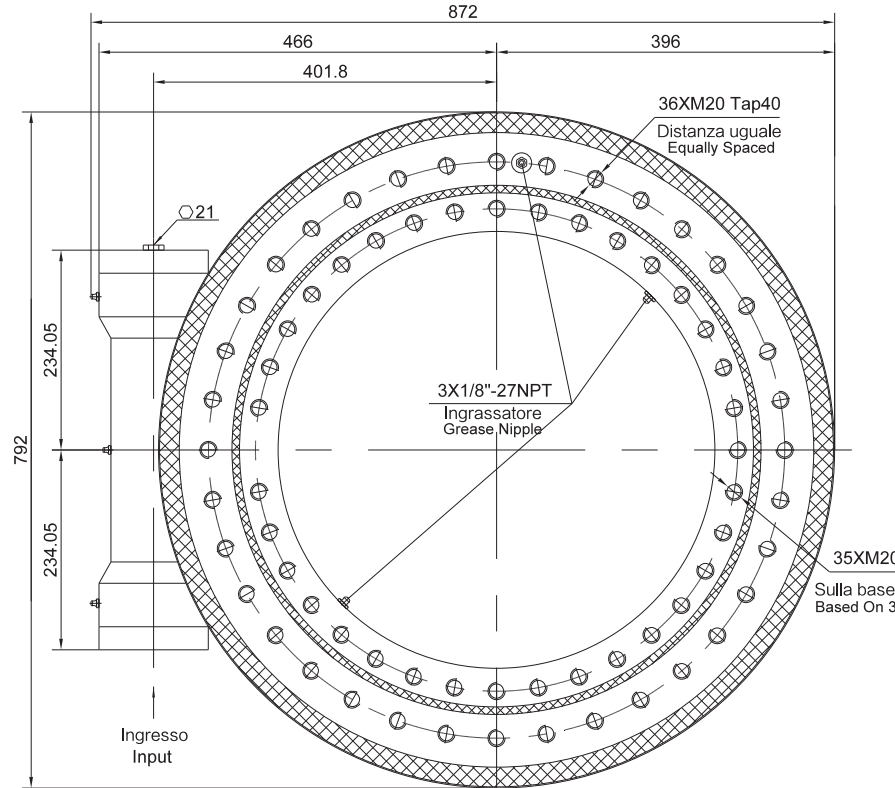
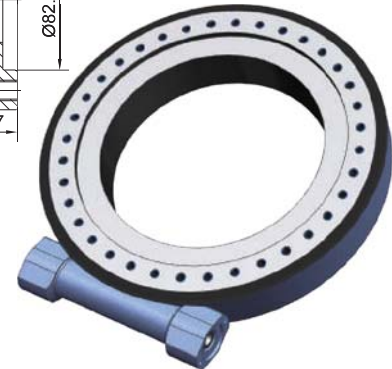
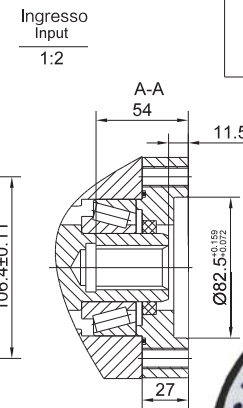
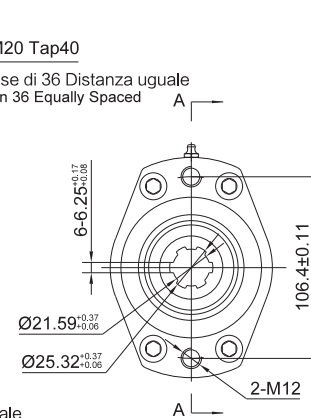
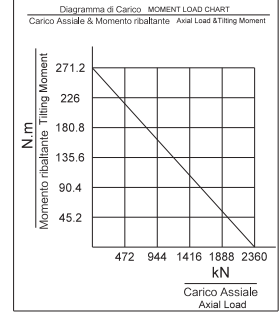


Tavola Girevole Parametri di prestazione Slewing Drive Performance Parameters

Velocità di uscita nominale	Rated Output Speed	<2.5 rpm	
Coppia in uscita	Output Torque	18 kN.m	13276.8 lbf.ft
Momento Ribaltante	Tilting	271 kN.m	200x10 ³ lbf.ft
Coppia Statica	Holding Torque	158.3 kN.m	117x10 ³ lbf.ft
Carico statico Assiale	Static Axial Load Rating	2360 kN	531x10 ³ lbf
Carico Statico Radiale	Static Radial Load Rating	945 kN	213x10 ³ lbf
Rapporto di trasmissione	Gear Ratio	150:1	
Precisione	Precision	≤0.15°	



SDL14-2-85B-BRH

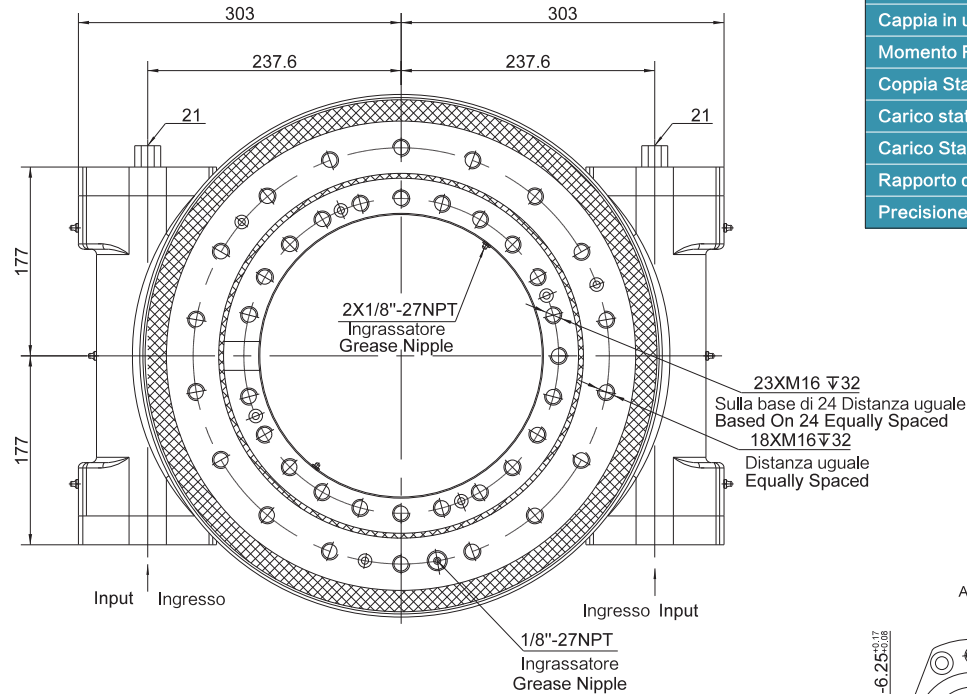
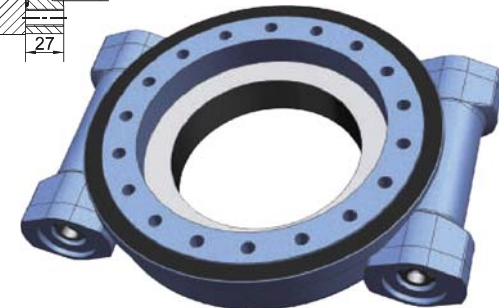
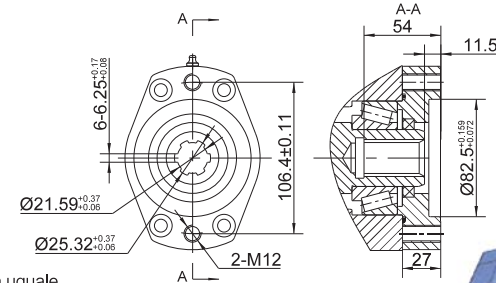
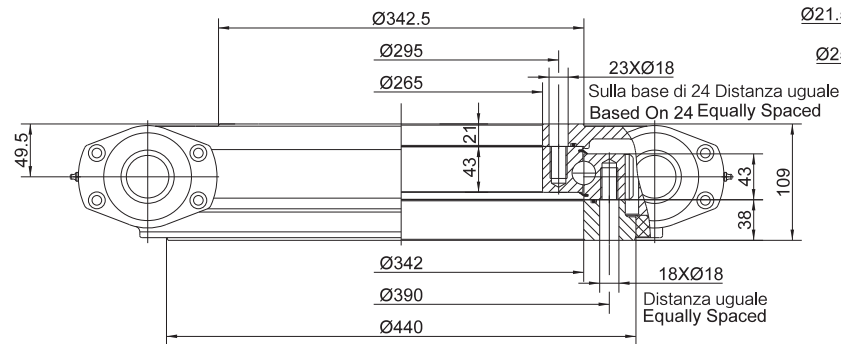
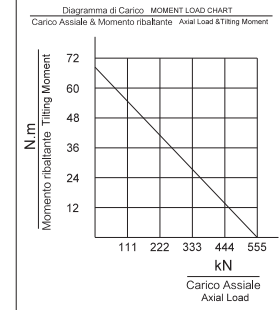


Tavola Girevole Parametri di prestazione Slewing Drive Performance Parameters

Velocità di uscita nominale	Rated Output Speed	<2.5rpm	
Coppia in uscita	Output Torque	12 kN.m	8851 lbf.ft
Momento Ribaltante	Tilting	67.8 kN.m	50x10 ³ lbf.ft
Coppia Statica	Holding Torque	72 kN.m	53x10 ³ lbf.ft
Carico statico Assiale	Static Axial Load Rating	555 kN	125x10 ³ lbf
Carico Statico Radiale	Static Radial Load Rating	222 kN	50x10 ³ lbf
Rapporto di trasmissione	Gear Ratio	85:1	
Precisione	Precision	±0.17°	



SDL17-2-102B-BRH

Parametri di prestazione
Performance Parameters

SDL17-2-102B-BRH

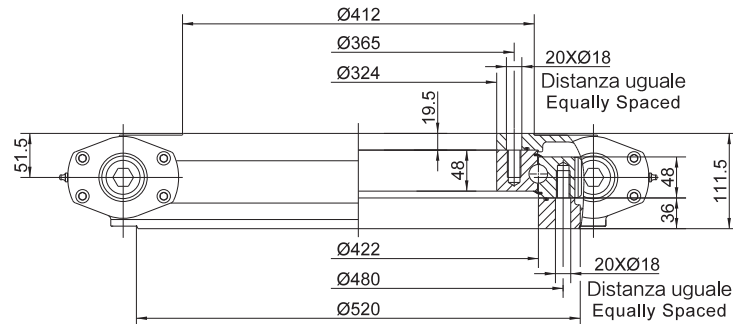
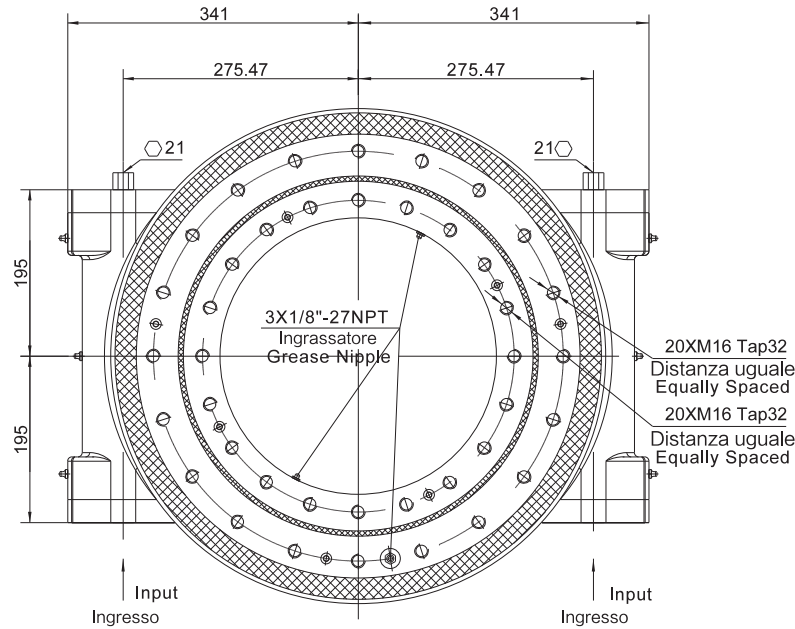
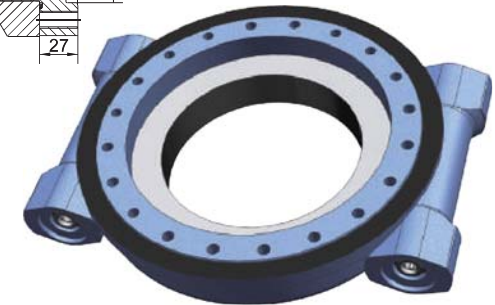
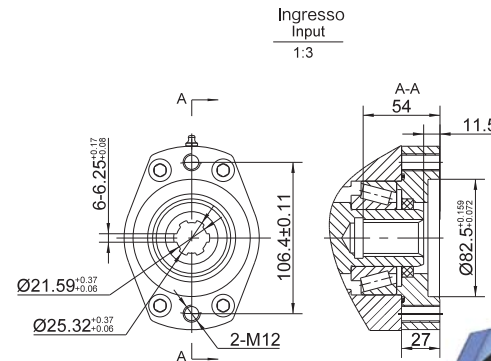
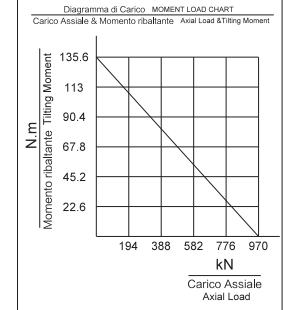


Tavola Girevole Parametri di prestazione Slewing Drive Performance Parameters

Velocità di uscita nominale	Rated Output Speed	<2.5rpm	
Coppia in uscita	Output Torque	15000 N.m	11064 lbf.ft
Momento Ribaltante	Tilting	135.6 kN.m	100x10 ³ lbf.ft
Coppia Statica	Holding Torque	108.5 kN.m	80x10 ³ lbf.ft
Carico statico Assile	Static Axial Load Rating	970 kN	218x10 ³ lbf
Carico Statico Radiale	Static Radial Load Rating	390 kN	88x10 ³ lbf
Rapporto di trasmissione	Gear Ratio	102:1	
Precisione	Precision	≤0.15°	



SDL21-2-125B-BRH

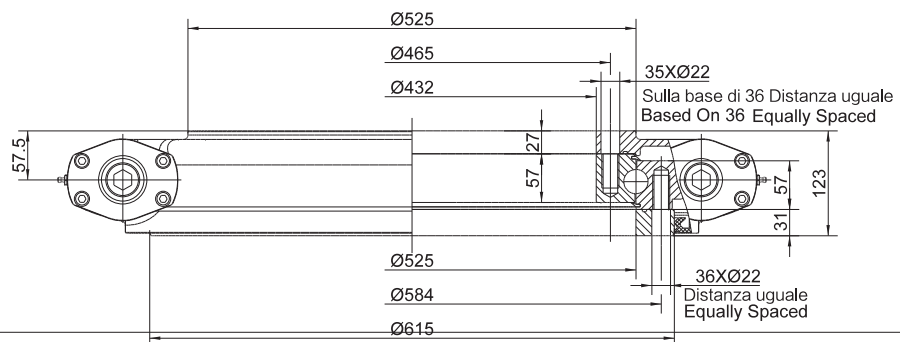
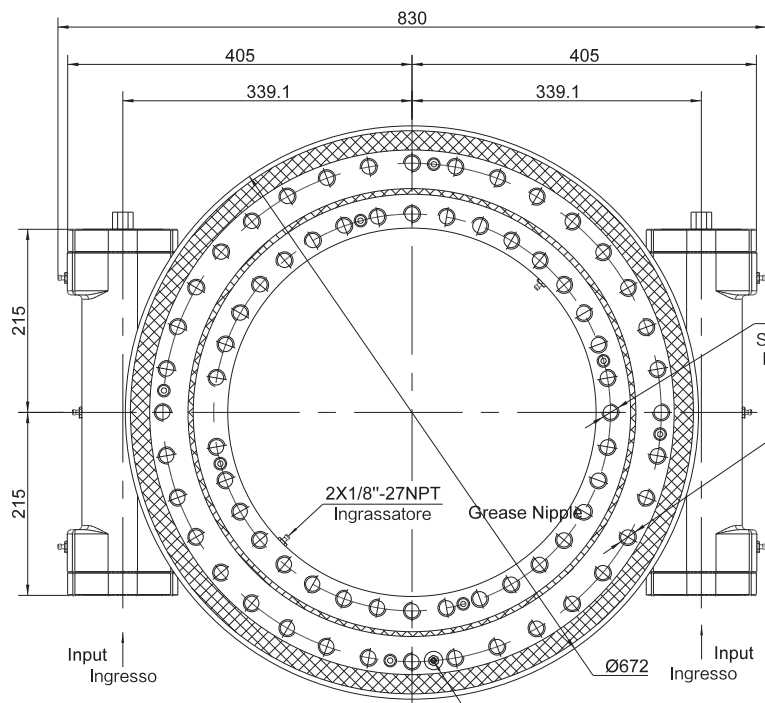
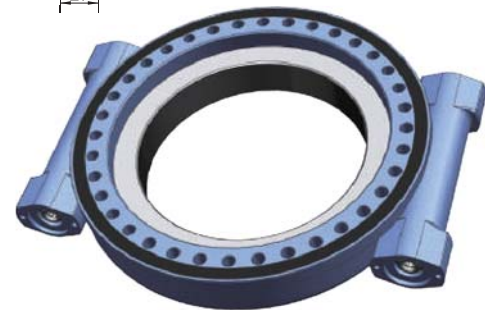
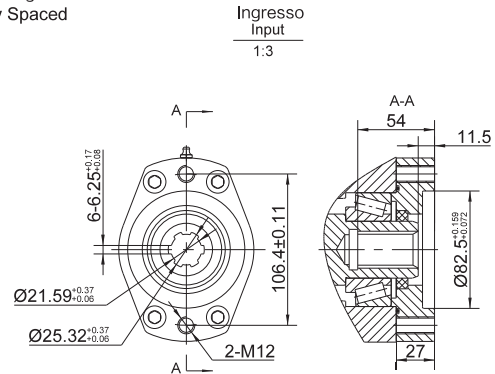
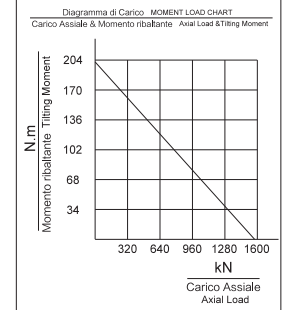


Tavola Girevole Parametri di prestazione Slewing Drive Performance Parameters

Velocità di uscita nominale	Rated Output Speed	<2.5rpm	
Coppia in uscita	Output Torque	22.5 kN.m	16596 lbf.ft
Momento Ribaltante	Tilting	203 kN.m	149x10 ³ lbf.ft
Coppia Statica	Holding Torque	158.7 kN.m	117x10 ³ lbf.ft
Carico statico Assile	Static Axial Load Rating	1598 kN	360x10 ³ lbf
Carico Statico Radiale	Static Radial Load Rating	640 kN	144x10 ³ lbf
Rapporto di trasmissione	Gear Ratio	125:1	
Precisione	Precision	±0.15°	



SD25-2-150B-BRH

Parametri di prestazione
Performance Parameters

SD25-2-150B-BRH

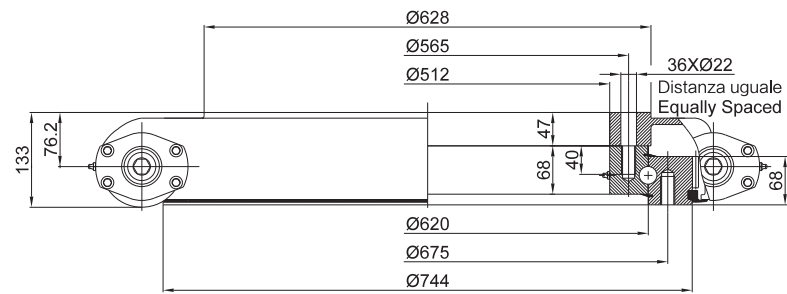
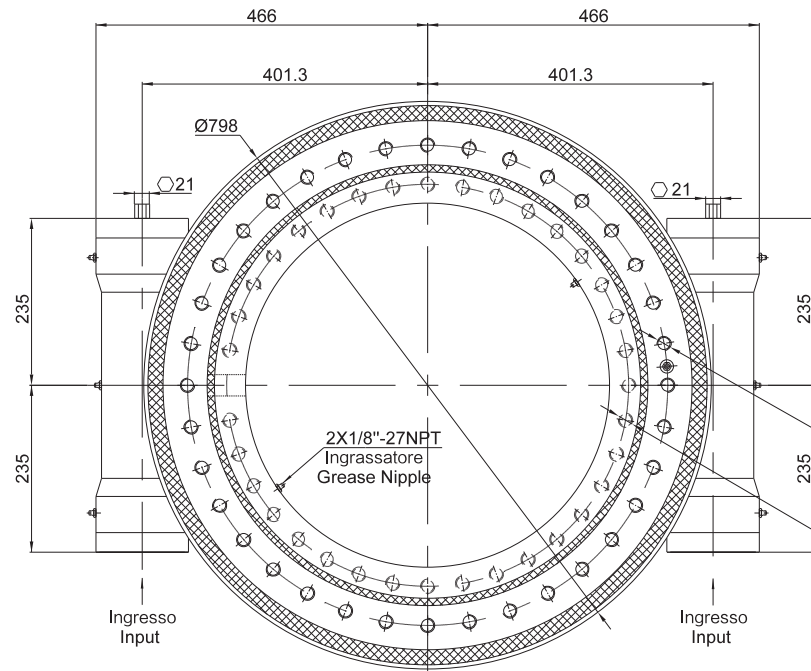
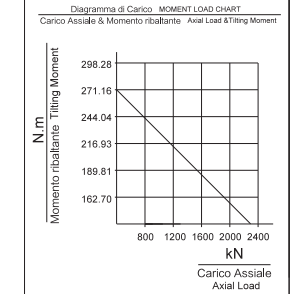


Tavola Girevole Parametri di prestazione Slewing Drive Performance Parameters

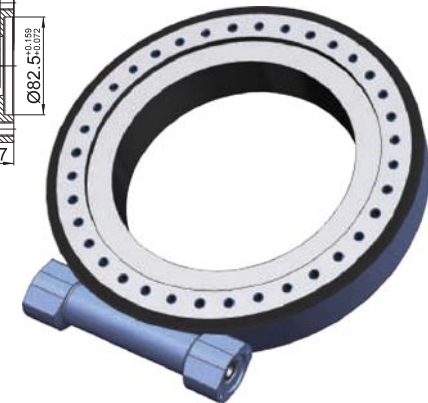
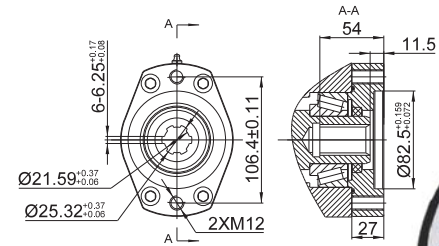
Velocità di uscita nominale	Rated Output Speed	<2.5 rpm	
Coppia in uscita	Output Torque	27 kN.m	19915 lbf.ft
Momento Ribaltante	Tilting	271 kN.m	200x10 ³ lbf.ft
Coppia Statica	Holding Torque	237.5 kN.m	175x10 ³ lbf.ft
Carico statico Assiale	Static Axial Load Rating	2360 kN	531x10 ³ lbf
Carico Statico Radiale	Static Radial Load Rating	945 kN	213x10 ³ lbf
Rapporto di trasmissione	Gear Ratio	150:1	
Precisione	Precision	≤0.15°	



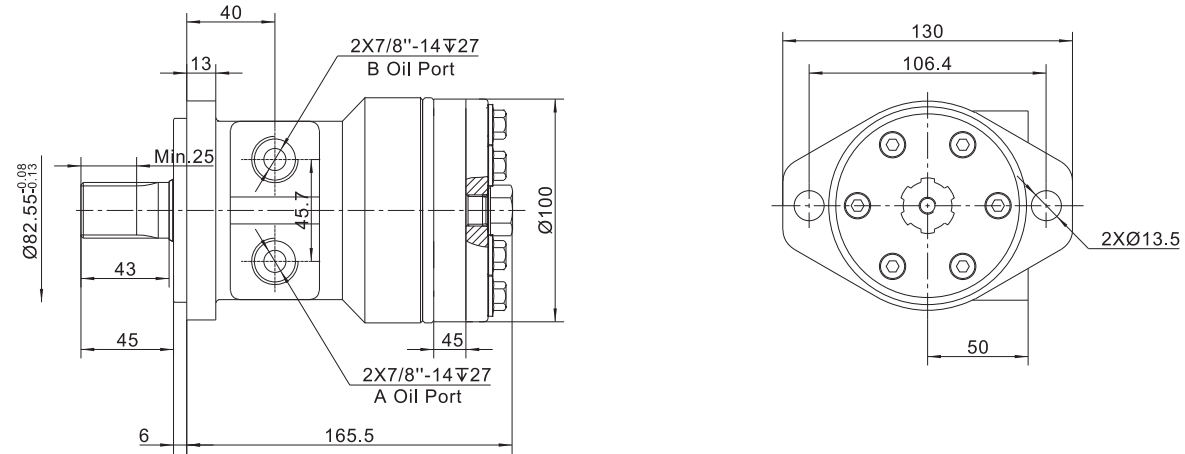
36X M20 Tap40
Distanza uguale
Equally Spaced

35X M20 Tap40
Sulla base di 36 Distanza uguale
Based On 36 Equally Spaced

Ingresso Input
1:5



Hydraulic Motor



Hydraulic motor performance parameters

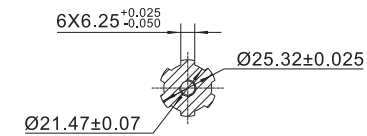
BMR 160 [157.2cm³/rev.]

Pressure (MPa) Max.cont. Max.int.

		5	7	9	10	12	14	16	17.5	20
Flow(L/min)	5	104 26	146 23	190 20	210 16	245 10				
	10	107 59	150 56	195 50	216 45	250 37	290 30	335 22		
Max.cont.	20	102 121	151 118	198 115	220 113	257 108	298 102	342 97	370 90	420 78
	30	97 184	146 178	190 173	217 170	256 164	295 155	340 143	368 128	416 103
Max.int.	40	89 246	140 241	185 235	210 228	252 220	290 210	335 194	363 177	412 150
	50	72 310	128 307	179 300	202 295	244 287	284 278	327 262	358 247	409 210
Max.cont.	60	60 374	116 367	170 359	198 354	240 346	279 338	321 323	352 306	400 265
	70	49 437	107 430	164 421	193 415	233 403	271 393	309 381	344 365	390 318
Max.int.	75	36 472	98 463	152 450	185 441	226 431	265 420	300 405	334 389	379 365

Torque (N.m) 416
Speed (rpm) 103

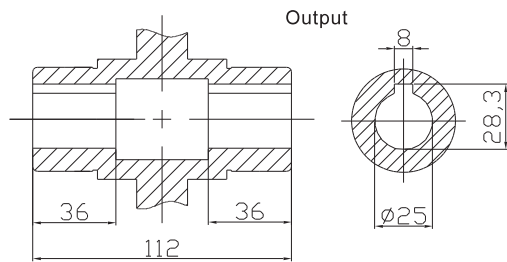
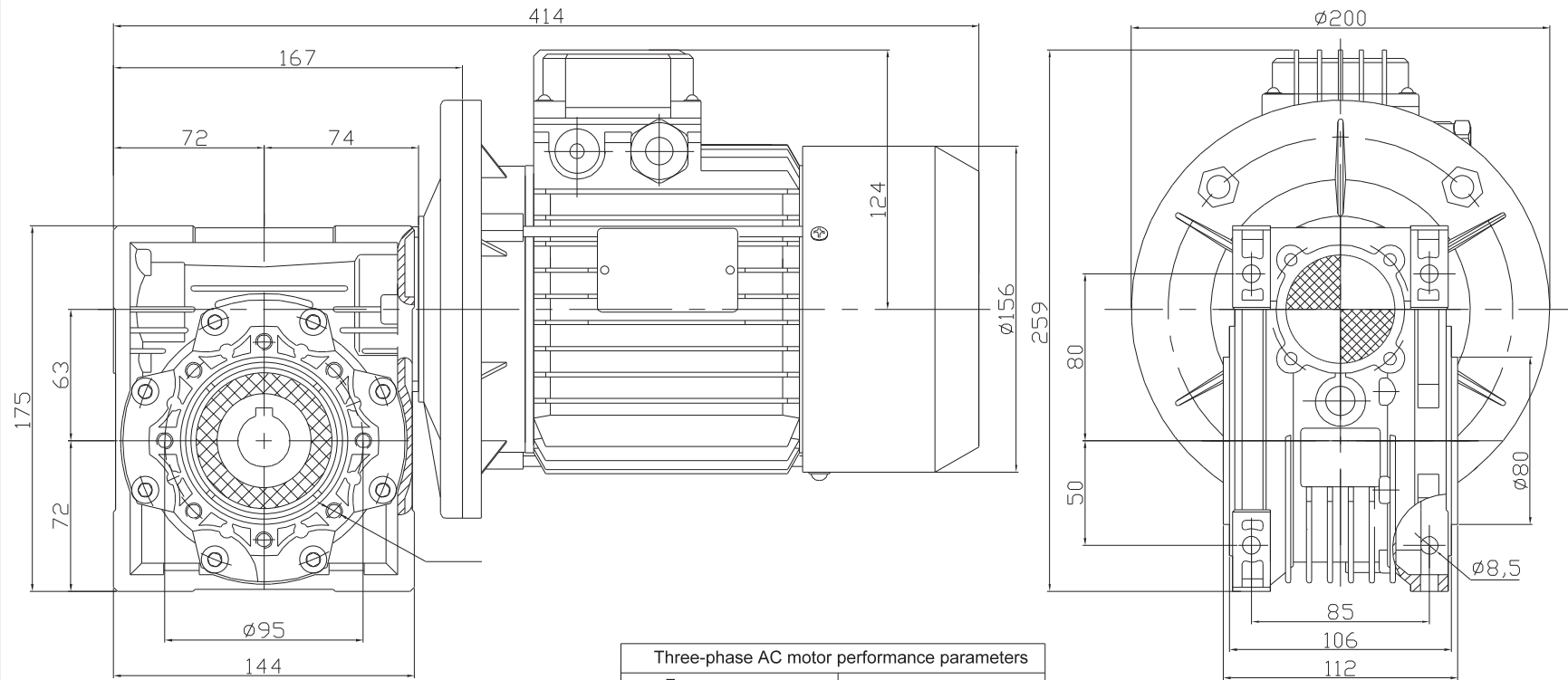
SAE 6B Spline



Electrical Motor

Parametri di prestazione
Performance Parameters

Electrical Motor



Three-phase AC motor performance parameters	
Frequency	50 Hz
Rated Power	0.75 KW
Insulation Class	F
Rated voltage	380V
Rated Speed	1400rpm
IP Class	IP55
Environment	Temperature:-30°C - +70°C
	Humidity:90%
Reducer performance parameters	
Output Speed	90 rpm
Output Torque	46.7 N.m
Reduction ratio	30:1



www.faremec.com

info@faremec.com

